



Behfar

www.behfar.org

Behfar Company

Behfar Company was founded in 2007 by Fariba Yahyavi and Amin Farahbakhsh in line with the aim of creating efficient and high quality space. The company specializes in the design and construction of tourism complexes. After almost two decades of continuous and dynamic activity, Behfar Group is now recognized as one of the leading companies in the hotel construction and equipment. The management structure of this complex has always sought to move dynamically and systematically, relying on the knowledge and experience of its employees to achieve its goals in the field of leisure and tourism complexes.

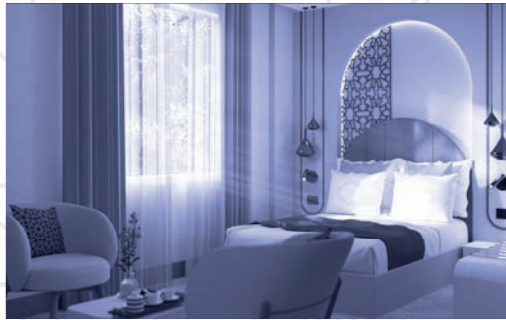
Our specialty:

- Design and realization of tourism and leisure, residential and office complexes
- Furnishing, interior design, manufacture of furniture and decoration for tourist and office complexes



Behfar







“Mavi Luxury Hotel

Use: Residential and tourism

Location: Maku

Year: 1401 - 1402

Activities performed: Interior design,
Construction and equipment

Site area: 40000 m²

Area: 2250 m²

Hotel Standards: ★★★★★



Mavi Luxury Hotel

📍 Iran, West Azerbaijan, Maku

Project 1



Exterior



Facade



Lobby

Interior



Royal Room



Standard Room

Interior



Gaming Room

Interior



GYM

Interior



Restaurant

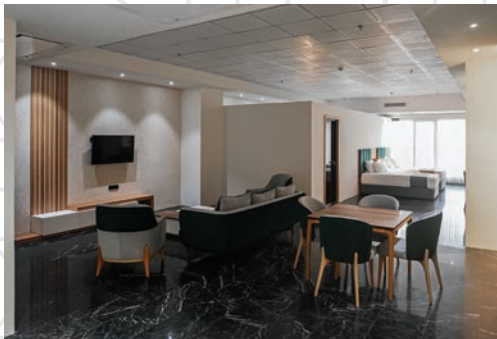


Corridor

Interior



Master Suite



Family Royal Suite



“ Delboom Ecolodge ”

Use: Residential and tourism

Location: Ramsar

Year: 1401 - 1402

Activities performed: design, Construction and equipment

Site area: 2465 m²

Area: 900 m²

Ecolodge Standards: ★★★



Delboom Ecolodge

📍 Iran, Mazandaran, Ramsar

Project 2



Delboom Ecolodge

Exterior



Daylight



Interior



Standard Suite





“ Parsian Evin Hotel ”

Use: Residential and tourism

Location: Tehran

Year: 1402

Activities performed: Interior design,
Renovate and equipment

Site area: 46000 m²

Area: 7650 m²

Hotel Standards: ★★★★★



Iran, Tehran, Evin

Project 3



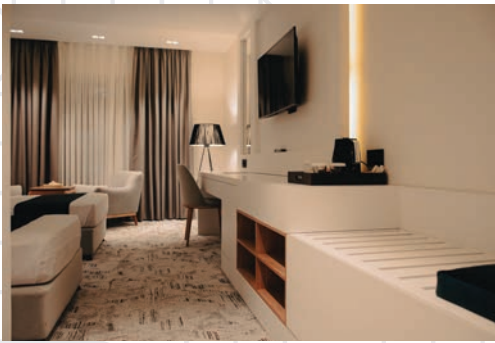
Parsian Evin Hotel

Parsian Evin Hotel

Type 1

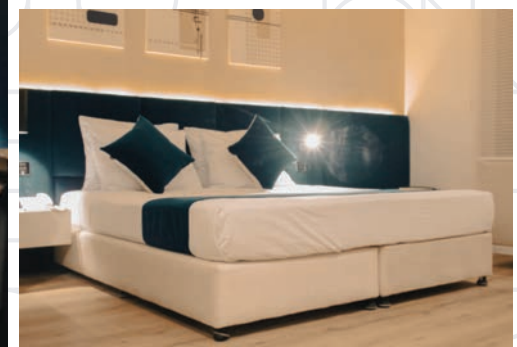


Room Design



Room Design

Type 3



Room Design





“Madineh Hotel

Use: Residential and tourism

Location: Qom

Year: 1401

Activities performed: design, Construction and equipment

Site area: 290 m²

Area: 2400 m²

Hotel Standards: ★★☆☆☆”

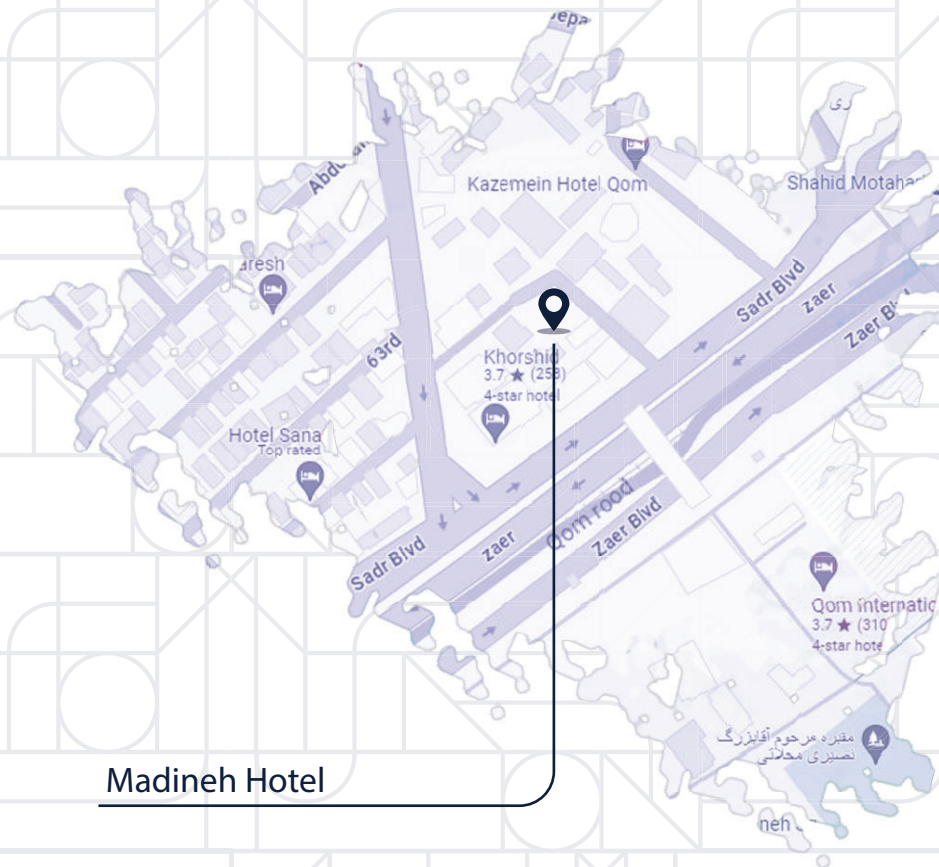




Madineh Hotel

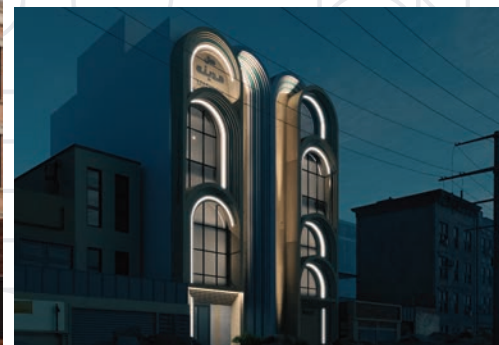
Iran, Qom

Project 4



Madineh Hotel

Exterior



Facade

Roof Garden

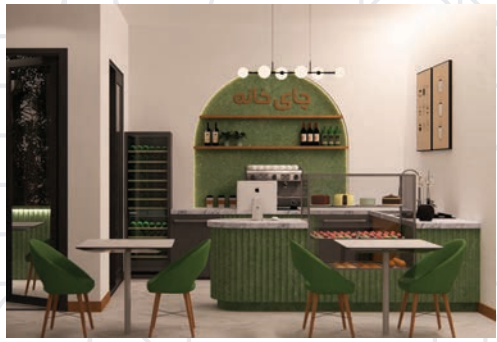


Restaurant Design

Interior

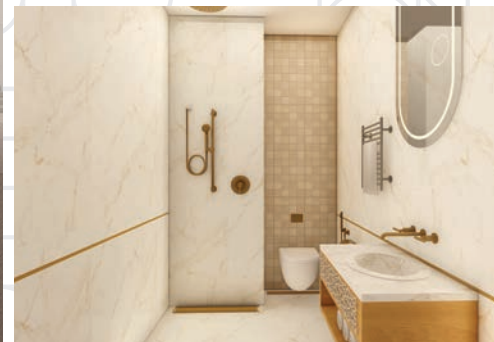


Lobby



Tea House Design

Interior



Double Room



Triple Room

Toranj Matin Hotel

Use: Residential and tourism

Location: Ramsar

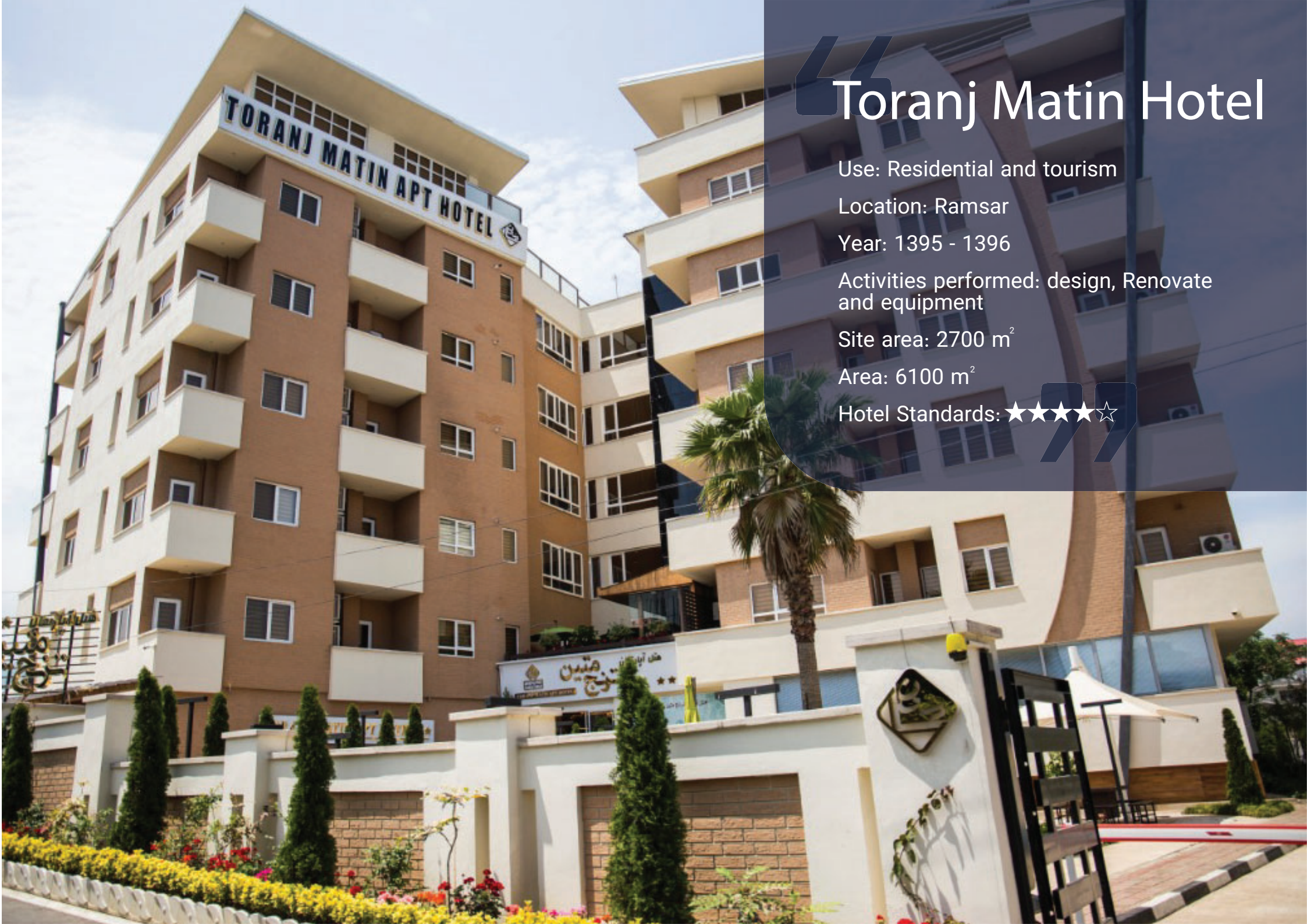
Year: 1395 - 1396

Activities performed: design, Renovate and equipment

Site area: 2700 m²

Area: 6100 m²

Hotel Standards: ★★★★★☆

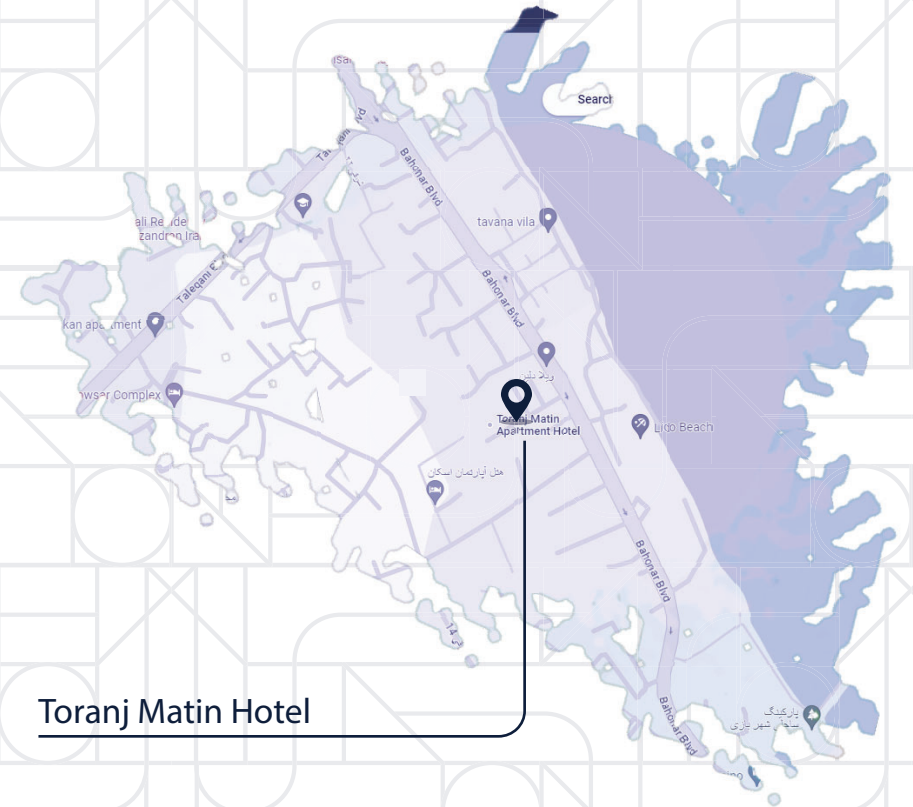




Toranj Matin Hotel

📍 Iran, Mazandaran, Ramsar

Project 5



Toranj Matin Hotel

Interior



Suites Photo

Landscape



Landscape Photo



Arg-e-Jadid Hotel

Use: Residential and tourism

Location: Bam

Year: 1402

Activities performed: Interior design

Land area: 21000 m²

Total area: 4400 m²

Hotel Standards: ★★★★★☆



Iran, Bam

Project 6



Arg-e-Jadid Hotel

Arg-e-Jadid Hotel

Type 1



Double Room



Room Design



“Metamorph Ecolodge”

Use: Residential and tourism

Location: Ramsar

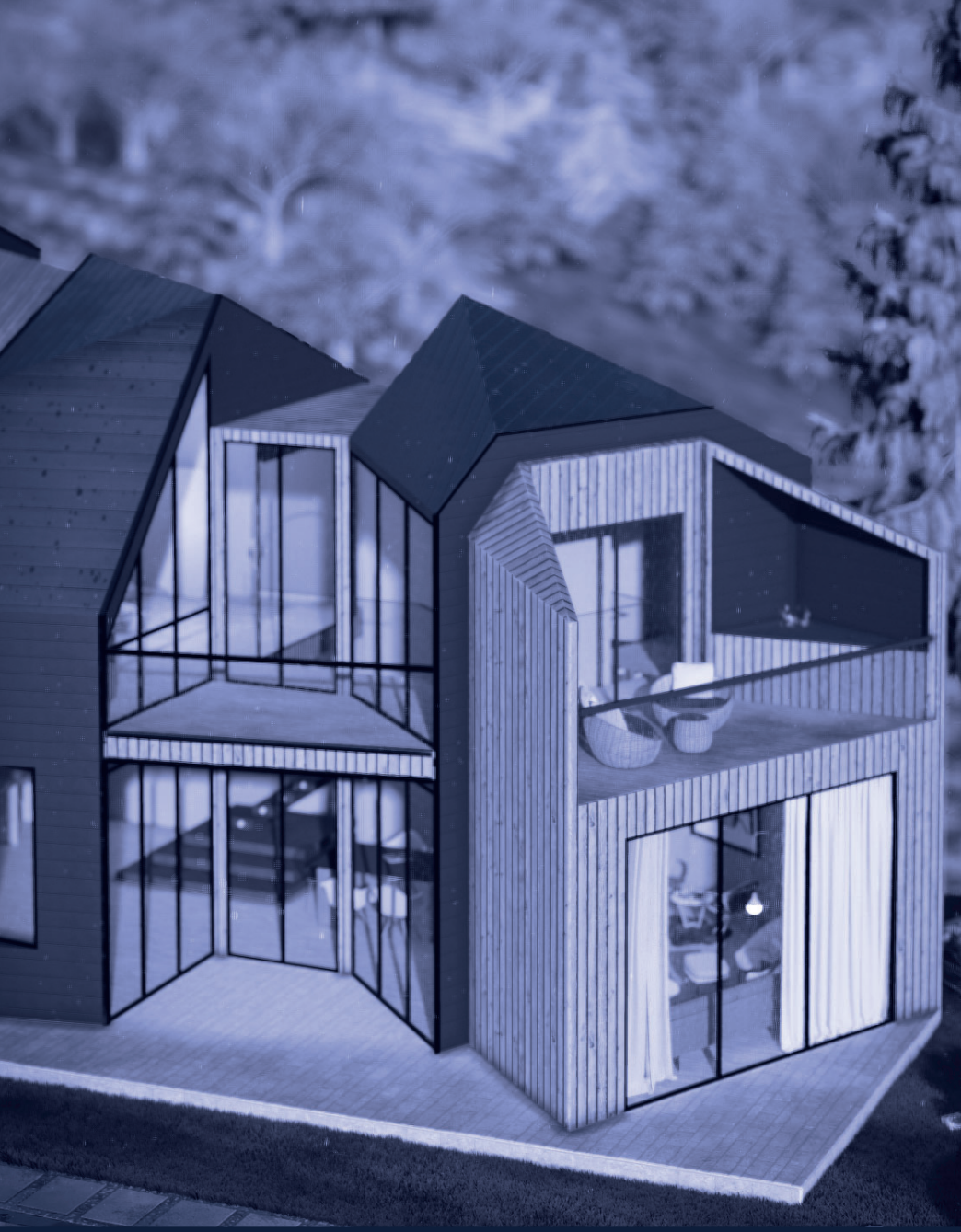
Year: 1402

Activities performed: design ,construction and equipment

Land area: 2600 m²

Total area: 800 m²

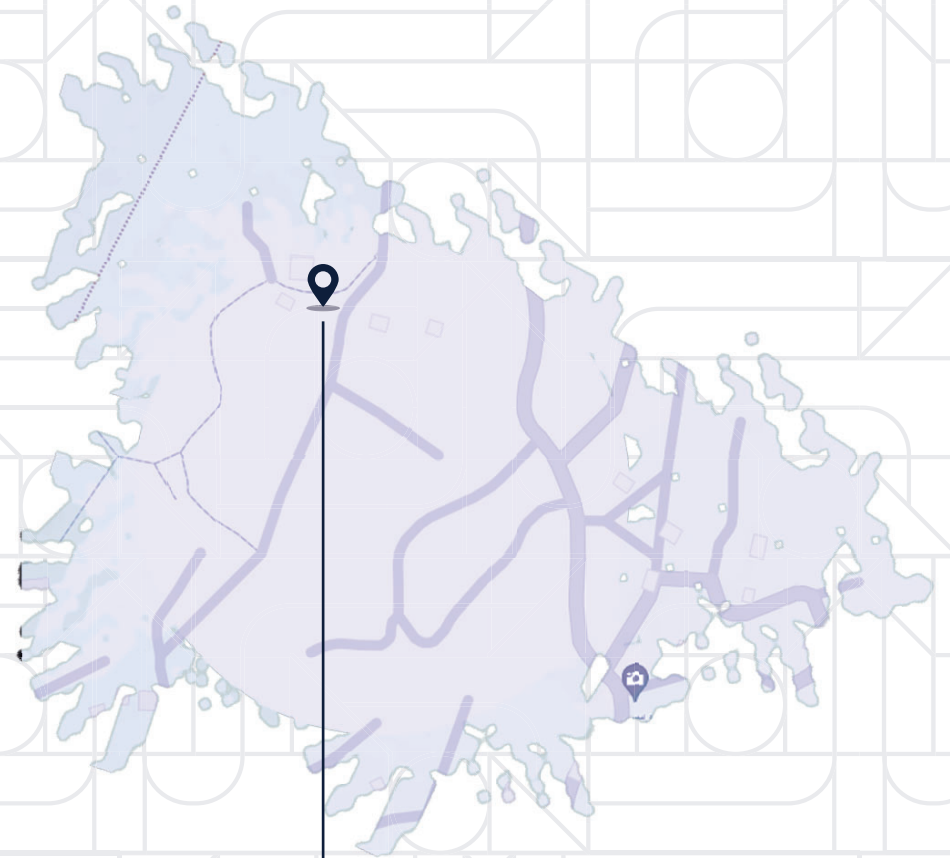
Ecolodge Standards: ★★☆☆



Metamorph Ecolodge

📍 Iran, Ramsar, Filband

Project 7



Metamorph Ecolodge

Exterior



Landscape



Standard Suite

Beyn Ol Haremeyn Hotel

Use: Residential and tourism

Location: Shiraz

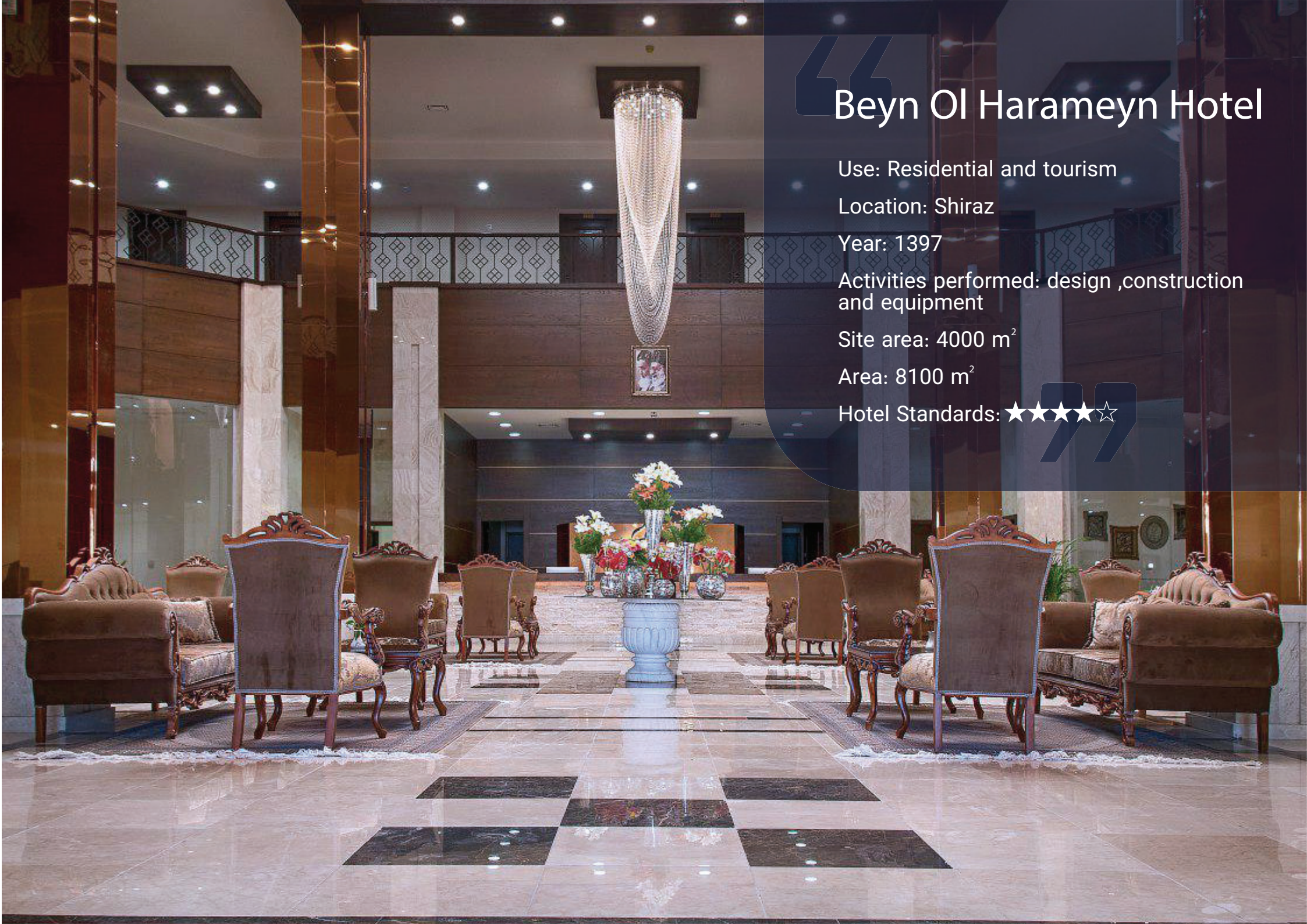
Year: 1397

Activities performed: design ,construction and equipment

Site area: 4000 m²

Area: 8100 m²

Hotel Standards: ★★★★★☆

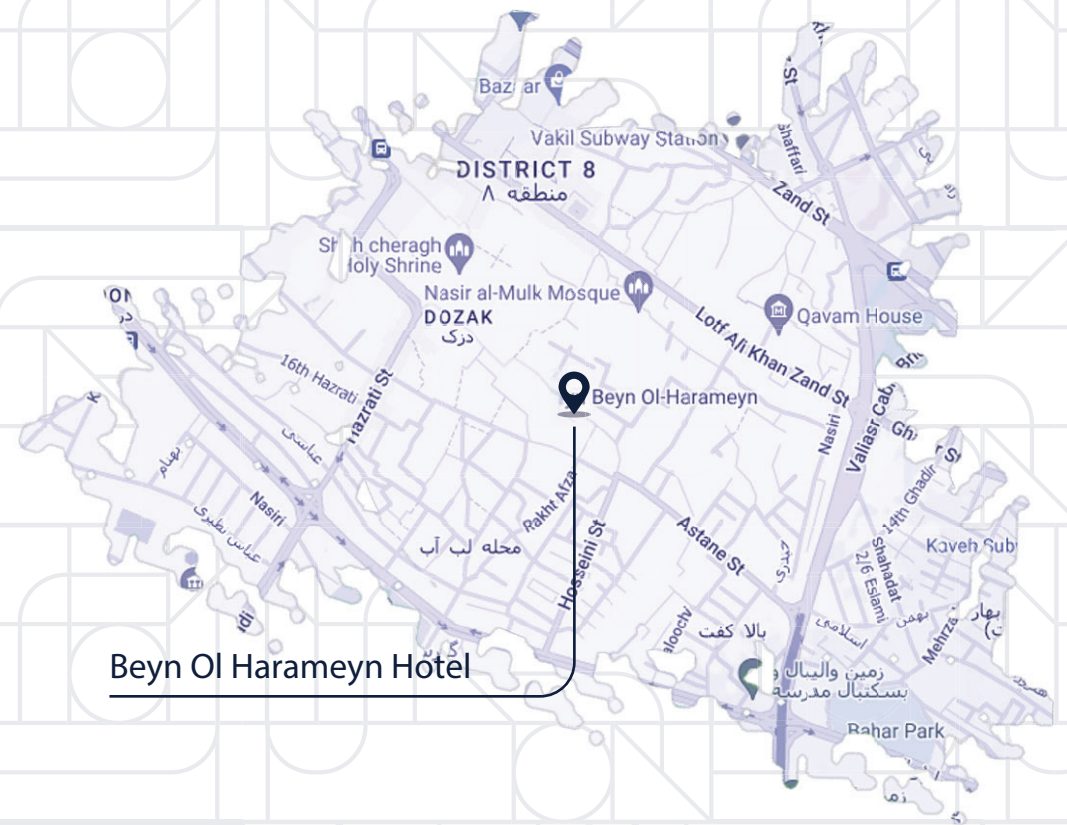




Beyn Ol Haremeyn Hotel

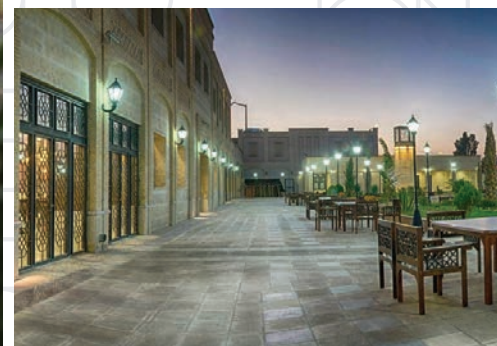
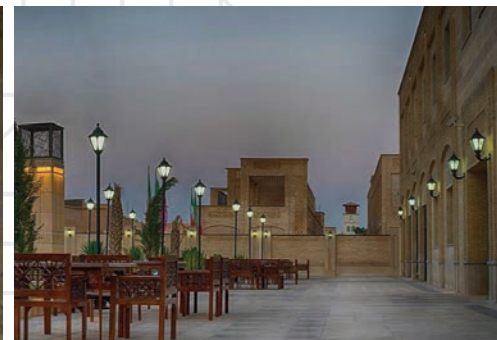
Iran, Shiraz

Project 8

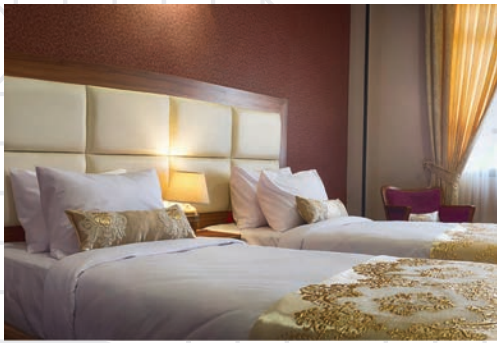


Beyn Ol Haremeyn Hotel

Exterior



Landscape



“ Firoozeh Hotel ”

Use: Residential and tourism

Location: Shiraz

Year: 1395 - 1396

Activities performed: design, Renovate and equipment

Land area: 780 m²

Total area: 3100 m²

Hotel Standards: ★★★★★☆





📍 Iran, Mashhad

Project 9



Firoozeh Hotel

Firoozeh Hotel

Interior



Suite Design



Lobby & Restuarant



“Mavi Complex

Use: Food court And Coffee shop

Location: Maku

Year: 1401 - 1402

Activities performed: Interior design
and Construction

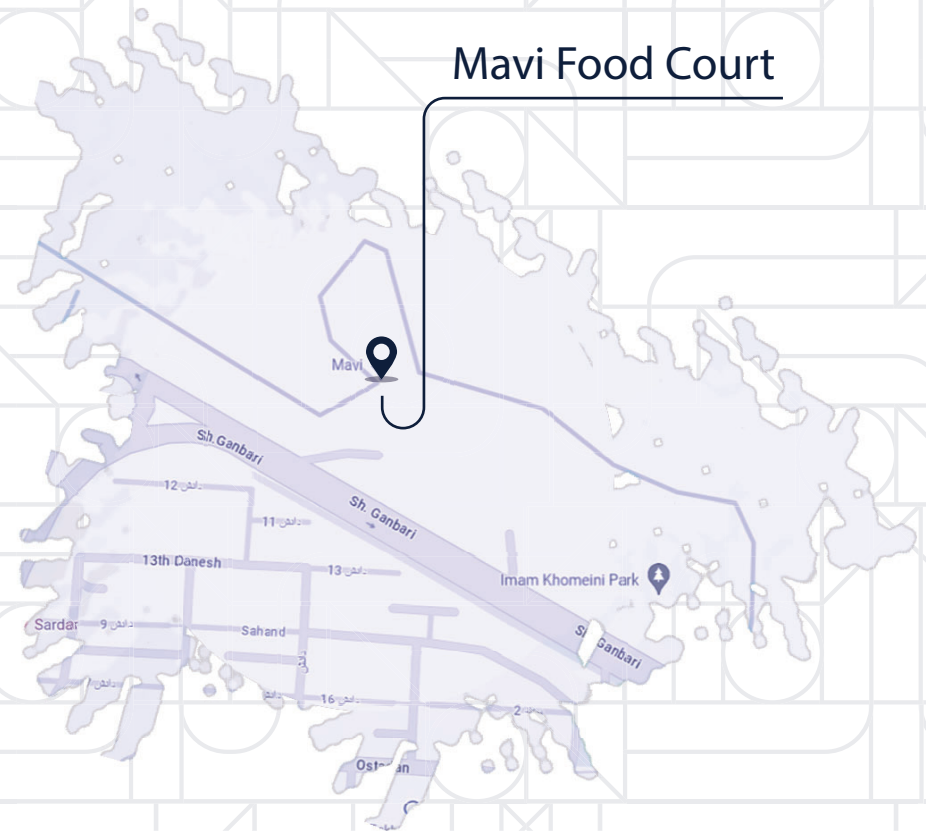
Site area: 40000 m²

Area: 1650 m²”



Mavi Food Court

Mavi Food Court



Interior



Coffee Shop - Ground Floor

Foodcourt / -1th Floor



Foodcourt Design



Happy Lounge

Use: Food court

Location: Qom

Year: 1402 - 1403

Activities performed: Interior design
and Construction

Site area: 1600 m²

Area: 1600 m²



Happy Lounge

Iran, Qom

Project 11

Happy Lounge



Type 1

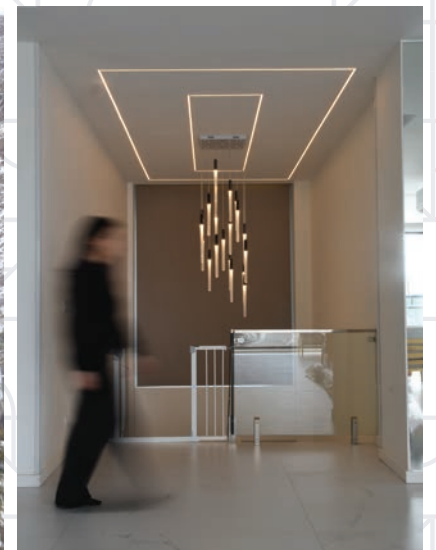


Food court Design



Food court Design

Other Projects



Other Projects





Behfar

Address: Un.14. No. 29. Farhang Blv. Saadat Abad

 02188689052-4  @behfar_Company  www.behfar.org  0938 9 20 30 40

